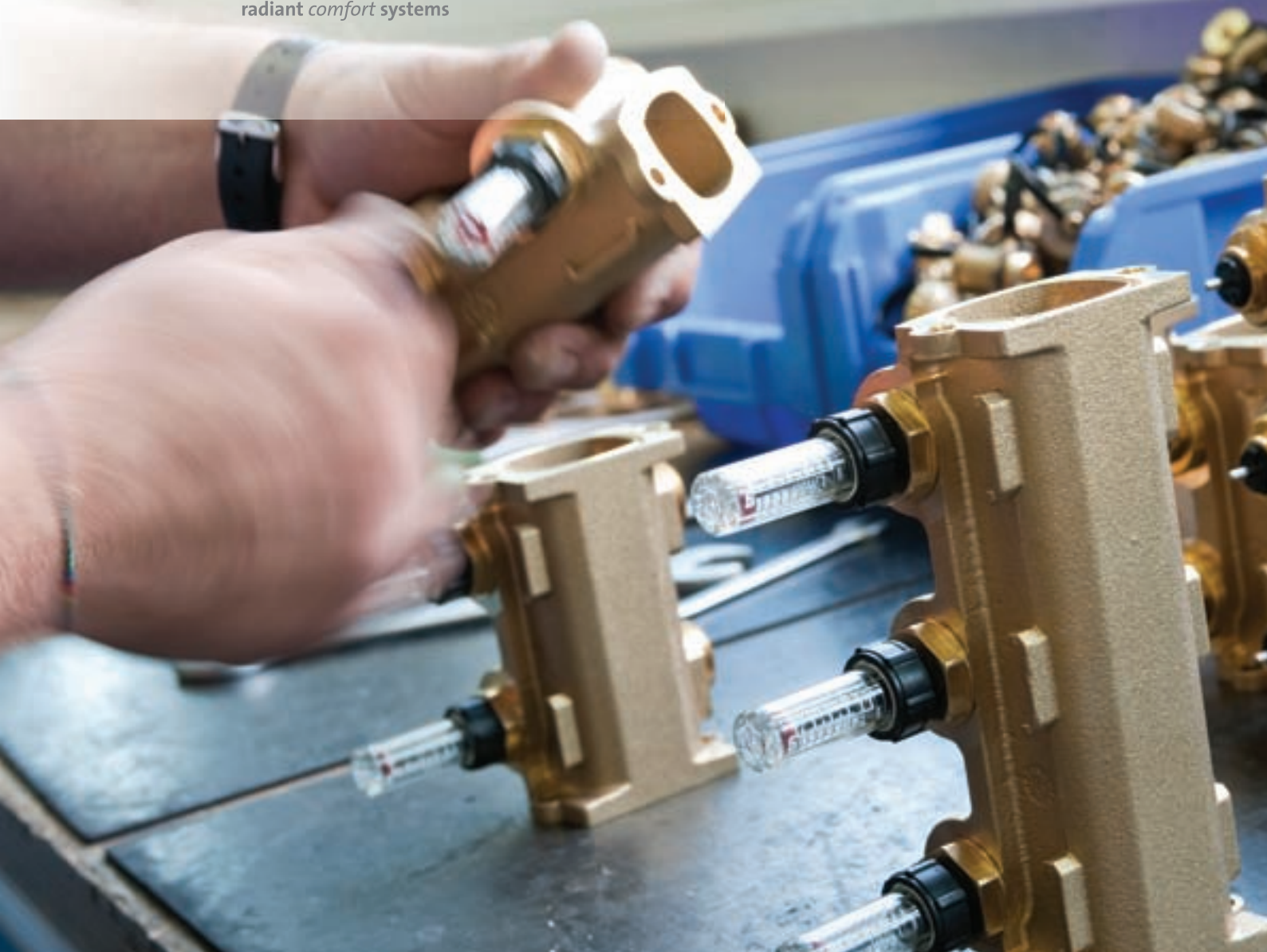


INNOVAZIONE
SERIE RISPARMIO ENERGETICO
PROGETTAZIONE CLASSE A CLIMATIZZAZIONE
& RAFFRESCAMENTO ABITARE SANO & INSTALLAZIONE ABITAZIONE
DESIGN BENESSERE ECOSOSTENIBILE
PO RADIANT COMFORT SYSTEMS FOR ANY BUILDING
SICOMFORT PAVIMENTO RADIANTE
TECNOLOGIA
SISTEMI RADIANTI CERTIFICAZIONE ENERGETICA
EPS ACUSTICA A PARETE E SOFFITTO
DISTRIBUZIONE & REGOLAZIONE
EFFICIENZA TRATTAMENTO ARIA SOLUZIONI
POMPE DI CALORE EFFICIENZA ENERGETICA
ECOSOSTENIBILE
LOGIA INNOVAZIONE



Research and development

Offering **advanced radiating heating/cooling solutions** of the very best quality, for each and every specific demand for well-being, is the objective pursued by Eurotherm thanks to the great technical potential and constant investment in the **research & development of new materials and technologies**.

Over the years, the Eurotherm engineers have filed numerous patents that have given the segment development a major boost, paving the way for new and revolutionary possible applications: **radiating solutions** that are no longer on the **floor** only, but also on the **wall** and **ceiling**, managed by **cutting-edge regulation** instruments designed to function according to the season.

In addition to **heating**, Eurotherm systems also guarantee **summer cooling** in controlled humidity conditions. During the development process, careful attention is always paid to **energy efficiency**. As a **certified CasaClima** partner, the company is the mouthpiece for an energy certi-

fication model that is now famous throughout Italy and which classifies buildings according to their energy performance; radiating solutions play a key role in this, thanks to the low operating temperatures when heating, combined with **high thermal yield**.

In support of the ethics of bioconstruction, the use of ecological and eco-sustainable materials such as wood fibre is privileged in the main system components (insulating panel). For a **healthy home**, in harmony with the environment and its balance, in search of the perfect combination of innovative technology, **sustainability and energy efficiency**. Participation in Italian and European entities and associations operating in the field of alternative energies for sustainable development and **collaboration with important universities** including the University of Padua, all help provide a dynamic comparison of experiences, which, for Eurotherm, provides a **constant update** and stimulus to search out **new solutions**, in a bid to strike a balance between man, the environment and energy.

3,000 projects in 365 days

The world of Eurotherm services starts before the project.

Support for planning means high quality performance in professional consulting services provided for professionals. Within the company, an entire department has been allocated these tasks: **qualified operators** with several years' experience in planning **guide the customer sensitively and safely through the choice of the most suitable** radiating heating and cooling system, considering the effective characteristics of the environments and the specific needs of the end users, from the first contact through to the preparation of the list of materials.

The work of the team is structured in such a way as to minimise response times and

optimise results, devoting the **same attention to small and larger projects.**

A **free service**, yet one of great value, and in which Eurotherm is a firm believer, resulting in an average of approximately 3,000 estimates prepared each year.

A **capillary network of consultants and expert partners** (qualified installers)



located throughout the territory, guaranteeing **qualified, customer-focused assistance.** Province by province, the Eurotherm agents have a vast range of high-quality products available and under constant development, to provide tailor-made advice at every stage of the system development.

Eurotherm customer services go well beyond completion of the sales negotiations. This concept is at the heart of the company's vision and takes concrete form in an efficient **after-sales service** provided by qualified staff, both in-house and external to the company. Assistance with problems that can arise on-site and control of correct functioning, as well as the initial configuration and plant start-up stages all come under this scope. And support in terms of the **documentation and certificates of purchased materials** and components is also of no small importance, regarded as an integral part of the **Quality Management** system that is officially recognised of the company.

Allianz RAS

GUARANTEED COMFORT

Eurotherm has chosen ALLIANZ RAS, a major European insurance firm, to provide the very best protection and assistance.

The Eurotherm warranty provides:

10 years of insurance for civil third party liability on all Eurotherm products; a **10 year warranty** against original flaws or defects in the product on all insulators and pipes and 2 years on all other Eurotherm products. Third party insurance on all maintenance and installation works carried out by our specialised staff.

INTERNAL PRODUCTION QUALITY GUARANTEE

The production of all parts within the production plant yields significant advantages in terms of flexibility in supplies and speed of deliveries. Products are designed, tested and developed entirely by the Eurotherm team, to guarantee great function and performance. Constant, severe controls guarantee the quality of each and every element.



smooth sheet coupling



EPS moulding



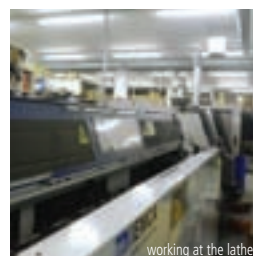
thermoforming



plasterboard milling



plastic moulding



working at the lathe



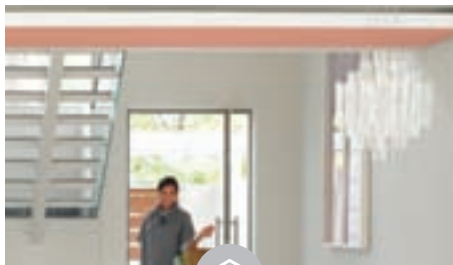
production of perimeter strip



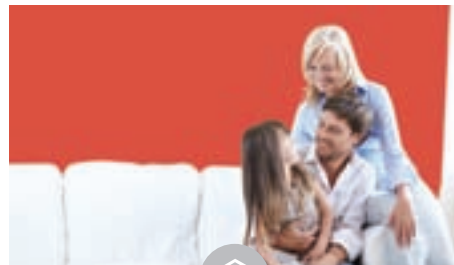
FLOOR SYSTEM



CEILING SYSTEM



WALL SYSTEM



CHOICE OF THE IDEAL SYSTEM

Flooring is the most well-known radiating application. With respect to traditional systems, we have come a long way and technological evolution has optimised **comfort performance** and **energy savings** in compliance with international standards. Eurotherm proposes a **vast range of floor systems** for all demands, all characterised by low operating consumption and **high performance** both for winter heating and summer cooling.

The radiating ceiling guarantees **even temperatures** with no moving air, thereby resulting in a **perfect thermal balance**. Characterised by **extremely low thermal inertia**, the ceiling system also enables the immediate start-up of the plant both for winter heating and summer air-conditioning. It can be used where the existing flooring cannot be dismantled, or dismantling it is not desired.

The radiating wall is an **innovative application** suitable for environments with **specific comfort needs**, such as bathrooms and stairwells and, as an **integration**, in rooms with high thermal needs. It is a valid alternative to the radiating floor, both for summer heating and cooling, when the existing flooring cannot be dismantled or dismantling it is not desired.

Objective well-being

Eurotherm radiating solutions see the end user as an individual, with personal **needs for well-being** that are reflected in all the areas of his life, from the private sphere to the working space. For Eurotherm, it is essential to satisfy these demands. According to the philosophy that has always guided us, developing a heating/cooling system is therefore a task that involves a particular responsibility, in which there are a great many variables to be considered and it is essential to understand the actual characteristics of the environments and the specific demands perceived by the people who will be living there. Different needs that change with the seasons and which the

Eurotherm radiating systems successfully meet using sophisticated regulations able to promptly manage the changeover from heating to cooling and back again, to guarantee perfect temperatures at all times and in all places.

Heating at low temperatures



Cooling at high temperatures



Controlled humidity

The ultra-quiet, invisible system that ensures your uninterrupted well-being 365 days a year, both in winter and summer.

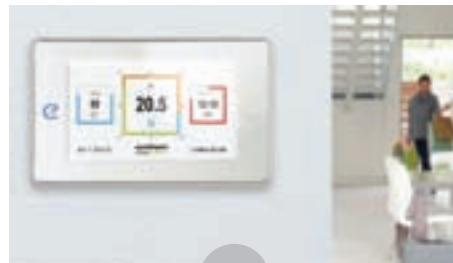
DISTRIBUTION



HIGH-PERFORMING DISTRIBUTION

For **the best possible efficiency of the radiating system**, it is essential to have a high-performing, functional distribution system. The hot water (winter) and cold water (summer) arrives from the generator to the coils of the pipes laid on the floor or installed in the ceiling/wall through collectors that provide a **balanced regulation of flow** and guarantee maximum capacity and perfect seal at all times.

SMART REGULATION



INTELLIGENT REGULATION

The heart of a radiating system is the system regulating its operation, in the most efficient management of all components. In the era of smart technology, the integrated Smartcomfort solution **optimises the performance** of the radiating system, **minimising consumption**. Through a single interface, the user can manage all aspects of the environmental comfort, from winter heating to summer cooling, including air change and humidity control.

AIR TREATMENT



CLEAN AIR FOR HEALTHY LIVING

Breathing **healthy, filtered, dehumidified** air is an important aspect of well-being in the home. This is why Eurotherm has developed air treatment systems that have been **optimised for radiating systems** and which play a key role, particularly during the summer. The machines are perfectly integrated into the environment and dehumidify the air in addition to controlling comfort temperatures and air exchange.

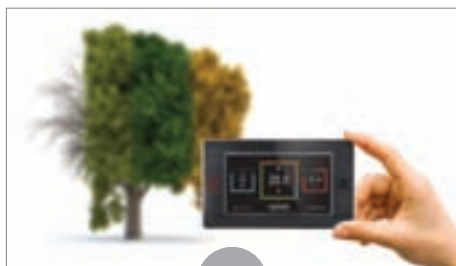
Welcome home

Comfort in all its forms is an essential part of modern life. Being at ease in all environments where the **"right" climate** for each season can be perceived, evenly spread throughout all the corners, is a little like **feeling at home**. Radiating heating and cooling from the floor, wall or ceiling has a great many advantages including a silent, invisible well-being that takes us through the whole year. The heart and soul of any plant is the system regulating its function, and as such, this is what makes the difference. It must be efficient in **managing energy consumption** and at the same time, always guarantee the most appropriate **comfort** in step with the seasons. This is partly the reasoning behind the development of **Smartcomfort**, an **intelligent regulating system, optimised for radiating systems**.

Its strength: managing all aspects of indoor comfort, from heating to air-conditioning, through a single user interface, including air change and humidity control.



100% MADE IN ITALY



YEAR-ROUND COMFORT MANAGEMENT

The commands of the digital control unit are used to **supervise the system** and jointly manage **temperature** and **humidity**. In a few simple steps you can **set your very own comfort conditions** at any time of the year, room by room.



4 MODELS FOR AN EXCLUSIVE DESIGN

The **innovative**, captivating design is at the service of a **simple, user-friendly service**. Four versions for a single tool: the smart display of the control unit is available in two different colours (black or white) with or without a chromed frame. The elegant graphics and luminous screen add a **touch of design** to each environment.



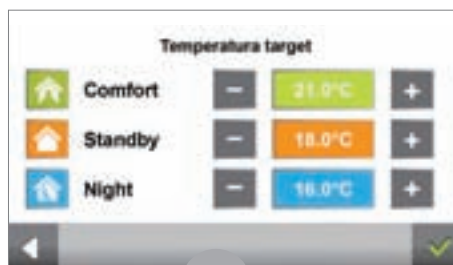
USER-FRIENDLY "TOUCH" INTERFACE

In the era of Smart technology, the digital control unit display becomes a backlit colour **touch screen** that enables the **centralised comfort management**, considering each and every environment and the system as a whole.



AUTOMATIC RECOGNITION OF DISADVANTAGED ROOM

Each environment is unique and different in terms of its characteristics and energy needs. The control unit **recognises the room with the greatest need for energy, automatically setting the system parameters to meet these demands.** And as climate conditions change, it redefines the "disadvantaged" room, an essential aspect in a regulation managing hot/cold systems.



OPTIMUM START / STOP

In order to enjoy **comfort at the time desired** by the user, the control unit establishes the start-up and switch-off of the system according to the inertia of the room. In thus doing, the set temperature is reached at the right time, thereby **reducing pointless energy wastage** and the consequent user discomfort: it is, to all intents and purposes, **properly optimised management.**



FUNCTIONS

In order to activate the Smartcomfort control unit, simply touch the display surface: the command icons appear immediately, showing the **data for all environments**, and allowing you to activate the settings block function, once the **desired parameters** have been established.

Comfort guaranteed in all environments

The Eurotherm floor radiating systems offer a **complete range of applications**, characterised by great versatility and suited to providing the best possible satisfaction of **all comfort needs**, in any living environment. Each system is the result of an important study of the technologies and materials and shows specific technical characteristics developed to **meet concrete requirements**, such as thermal and/or acoustic insulation or eco-sustainability of com-

ponents. Apart from the technical specifications, advantages shared by all Eurotherm systems include low operating temperatures that result in **reduced consumption to manage the system** (with major savings on bills) and **high performance**, both in **heating** and **cooling**. Performance is certified by authoritative research institutes and universities, nationally and internationally, for a comfort that is guaranteed in all respects.

europlus-lambda system ▶



HARD-WEARING ASHLAR



euroflex extra system

HARD-WEARING VERSATILE THERMOFORMED PRODUCT

- ▶ Extremely hard-wearing thermoformed panel
- ▶ Wide range of thicknesses

Thanks to the unique form of the ashlar, contact of the pipe with the insulation, typical of ashlar systems, is reduced. **The upper sheath in thermoformed PS** gives the ashlar unparalleled mechanical robustness, making it **resistant** to "stress" on the construction site. Irregular perimeter rooms are no longer a problem: **pipes can be laid in any direction**, even diagonally.



CHOICE OF THICKNESS



europlus-flex system

QUICK AND EFFICIENT

- ▶ Wide range of thicknesses
- ▶ Certified quality
- ▶ Quick installation

This system guarantees **excellent energy results**, insofar as it maximises system yield and guarantees **good insulation** downwards. In laying the pipes on a smooth sheet, its contact points with the insulating panel are reduced. The panel consists of insulating material in polystyrene foam, coupled with an aluminised multilayer sheath where useful guidelines are provided to help install the pipes.



HIGH INSULATION

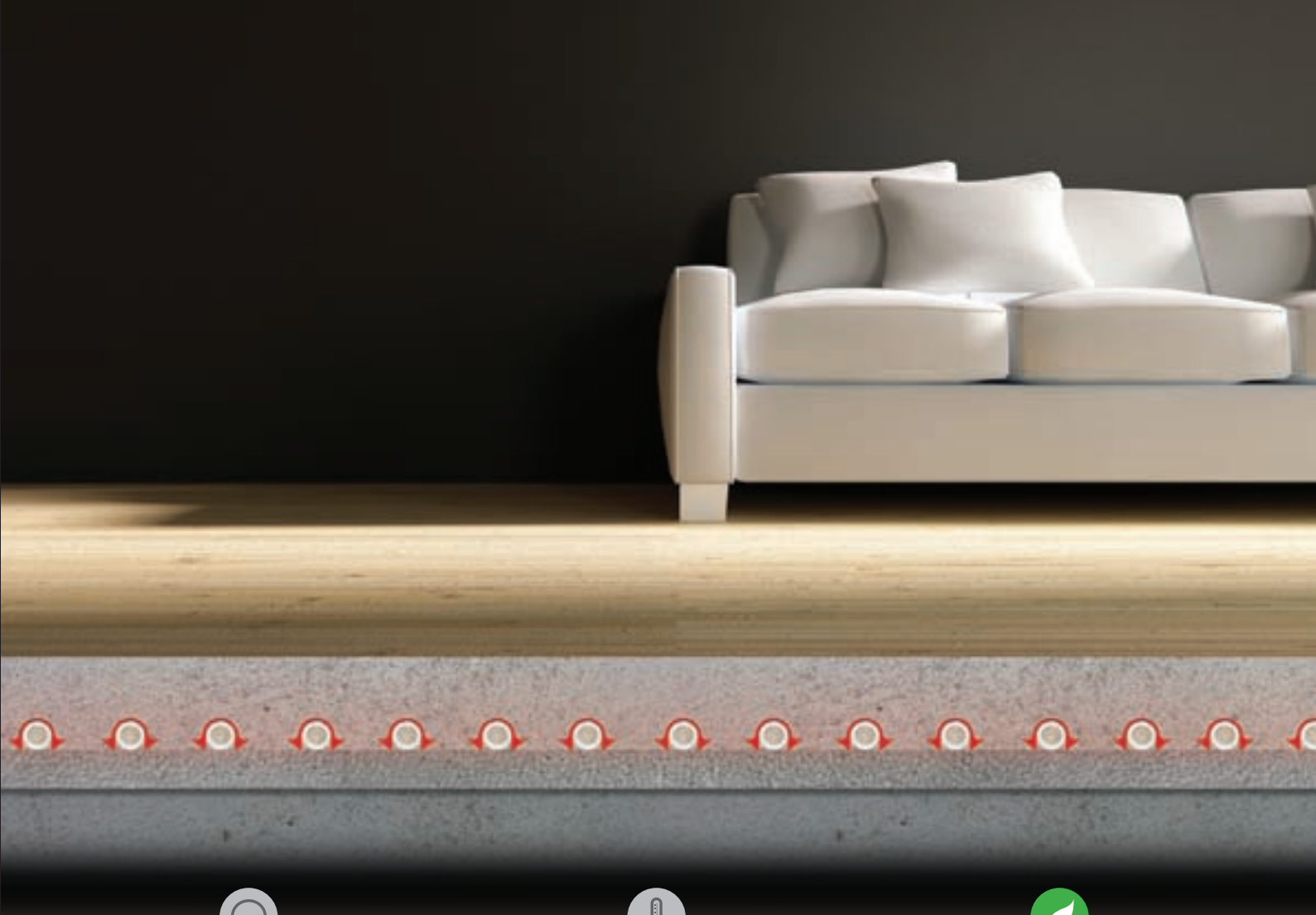


europlus-lambda system

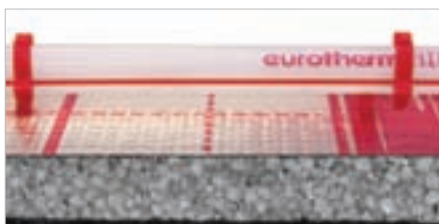
HIGH PERFORMANCE INNOVATION

- ▶ High thermal performance (λ_D 0.030 W/mK)
- ▶ Wide range of thicknesses

Europlus-lambda is the system designed to meet the needs of a **quality-focused market**. It uses an insulating panel consisting of polystyrene foam, **sintered with graphite**, which improves thermal conductivity and therefore guarantees **excellent insulation**. The panel is covered on the top by an aluminised multilayer sheath, where useful guidelines are provided to help install the pipes.



ACOUSTICS **-37 dB**



europlus-silentium system

UNBEATABLE AGAINST FOOTSTEP NOISE

- ▶ The best possible noise reduction on the market
- ▶ Acoustics certified by Padua University (DTF)

Unparalleled comfort, energy efficiency and acoustic insulation. This is the winning formula of the revolutionary europlus-silentium floor heating and cooling system. Suitable for any field of application, thanks to its construction characteristics, it successfully **reduces footstep noise** down to **-37 decibels**.

HEAT RESISTANCE



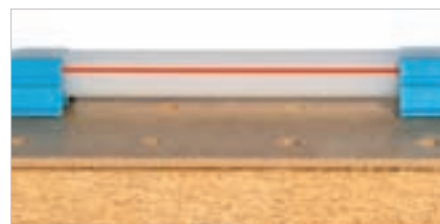
eurosuper | eurotop systems

THE IDEAL ENERGY SOLUTION

- ▶ Guarantees excellent energy results
- ▶ Insulation guaranteed over time
- ▶ Reduces footstep noise (eurotop)

This system guarantees **excellent energy results**, insofar as it maximises system yield and guarantees **excellent insulation** downwards, reducing dispersion. The panel consists of insulating material par excellence: polyurethane with double aluminium. In laying the pipes on a smooth sheet, its contact points with the insulating panel are reduced.

100% ECOLOGICAL



ecoplus system

NATURE IN YOUR HOME

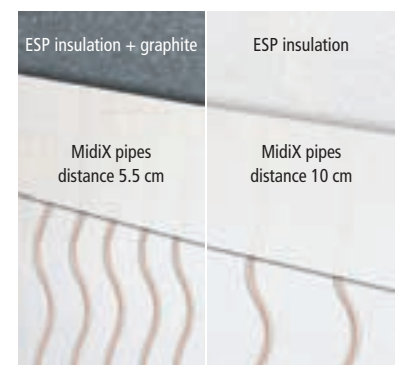
- ▶ 100% natural wood fibre insulation
- ▶ Ideal for bioarchitecture
- ▶ Reduces footstep noise

The ecoplus system consists, in its insulating package, of **entirely ecological materials**: wood is the only material used. The clip support sheet follows the same construction process as the ecoplus sheet, but with greater density. The two overlaid sheets result in the **attenuation of footstep noise**, calculated according to EN 12354-2 as ~ 31 dB.



NEW

CHOICE OF 2 VERSIONS



The Leonardo system has two versions meaning that optimal configuration can be obtained for the environmental characteristics.

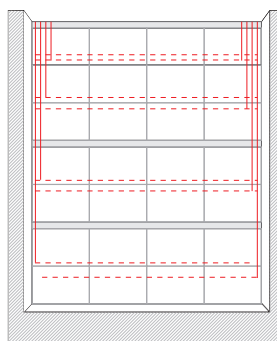
Leonardo ceiling system

THE REVOLUTIONARY CEILING SYSTEM

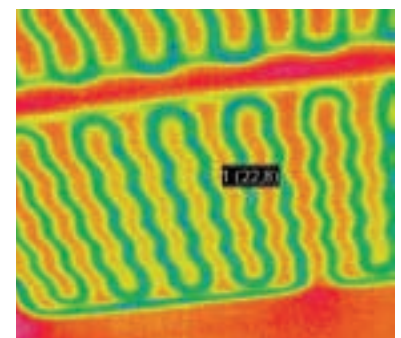
- Ideal in restructuring works and where it is not possible to work on the floor
- Certified EN 14037-5, EN 14240 (WSP lab) system
- High cooling performance

The Leonardo system enables the development of a ceiling radiating system, for multiple uses. This system consists of modular plasterboard panels with **MidiX pipes already included and arranged in a coil**, with a twisting design in order to **maximise the exchange surfaces** between pipes and plasterboard. The plasterboard panel is coupled with a polystyrene foam insulating sheet.

MORE ACTIVE SURFACE AREA



The versatility of the panel means that surface area can be maximised and therefore temperature is even both when heating and cooling.



Certified system **WSP Lab**
Heating and cooling yield **certified** according to standard **prEN 14037-5 - EN 14240**



Active ceilings and walls for your well-being

Comfort takes no breaks throughout the year, even if as seasons change, the perceived needs may vary accordingly. Warmer seasons bring with them a strong need to protect ourselves against high external temperatures, creating a pleasant microclimate in the environment, ensured by temperatures that are not too high, but neither are they too cold. Alongside the flooring solutions, **innovative ceiling and radiating wall solutions** have also been developed to guarantee good results in **winter heating** or for special areas such as stairways, with high demands, and which also give excellent performance for **summer cooling**. They are combined with special dehumidification and dehumidification/conditioning machines that avoid condensation from forming, keeping humidity constantly under control and playing an important role in recirculating the air in the environment.

NEW



ecowall system

THE ECOLOGICAL WALL SOLUTION

- All-ecological insulation material
- Ideal for use in bioarchitecture

This system is used when **a floor system cannot be laid or if it should be necessary to supplement a heated area.**

Thanks to the use of ecological insulating materials and pipe-holding profiles suited for 12 x 2 mm pipes, the system can be used in all circumstances.



Leonardo wall system

THE REVOLUTIONARY WALL SYSTEM

- Coil configuration of pipes to maximise exchange surface

The Leonardo system enables the development of a wall radiating system, for multiple uses. This system consists of modular plasterboard panels with **MidiX pipes already included and arranged in a coil, with a twisting design in order to maximise the exchange surfaces** between pipes and plasterboard. The plasterboard panel has a declared thermal conductivity of 0.25 W/mK and is supplied without the insulating sheet.



Every home deserves a radiating system

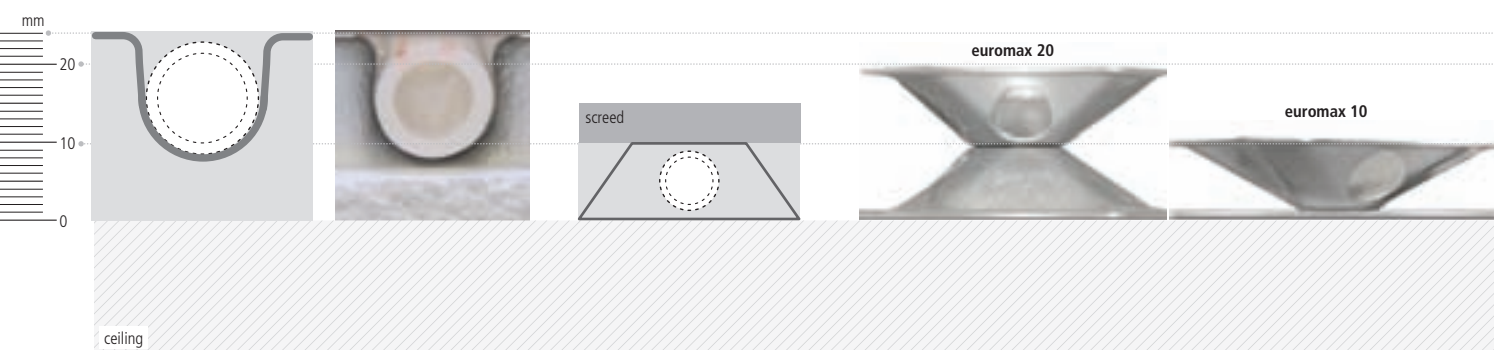
More and more frequently, **restructuring** provides an opportunity to **improve the energy performance** of our homes, in order to **gain in efficiency** and therefore reduce the consumption in managing systems. "Efficient" restructuring means replacing the boiler together with the old heating system (radiators) with a more innovative, higher performance solution. Under current regulations, these types of works are encouraged by tax instruments in the taxpayer's favour. In design terms, on the other hand, it means dealing with various aspects, including: structural consolidation, humidity within walls, slim thicknesses,

replacement of doors and windows, limiting loads on floors. The vast range available from Eurotherm includes **floor heating and cooling systems specifically developed to meet all the specific demands of buildings undergoing restructuring works**. The objective is always the same: having a system that is perfectly integrated into the environment, more today than yesterday. Where owners, for various reasons, do not wish to dismantle the floor, thereby preventing it from being redone, we recommend the innovative ceiling or wall radiating heating/cooling solutions.

zeromax radiating system ▷

25*
mm
THICKNESS

15*
mm
THICKNESS



euroslim system

DEVELOPED FOR RESTRUCTURING WORKS AND PERFECT FOR DRY INSTALLATIONS

- ▶ Its lightness makes it perfect for structures requiring smaller loads (e.g. wooden mezzanines)
- ▶ Quick to install since there is no need for the screed to dry

This system has been specifically developed for **restructuring works** or other works where the required heights are not available and the **screed needs to be laid dry** to reduce the time needed.

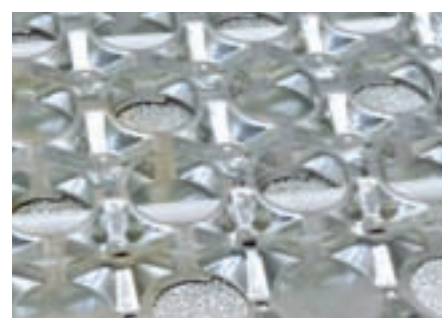
The special galvanised steel sheet enable heat to be diffused by the pipes to the surface.

euromax system

SLIM DESIGN, MAKING IT PERFECT FOR RESTRUCTURING WORKS

- ▶ Low thermal inertia
- ▶ Complies with EN 1264-4 standard
- ▶ Maximum load resistance

The euromax system allows for a floor radiating system to be created in **minimum thicknesses**, always inserting an insulating panel as per the standards. Thanks to the metal structures into which the system pipes are inserted, **euromax withstands particularly high loads**.





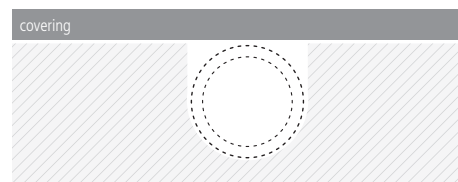
* height of insulating sheet to be calculated for the thickness where required



zeromax



covering



1

MILLING THE SUPPORT

By using a special machine, guides are created within the plasterboard-fibre support to provide a bed for the pipe.

2

LAYING THE PIPES

Once milling is complete, the MidiX pipes are placed into the guides.

3

SYSTEM COVERING

Once the pipes have been installed, the system needs merely be covered with a finish (tiles, parquet, etc.), as best fits your requirements.

zeromax system

ZERO THICKNESS AND MAXIMUM INTEGRATION INTO THE ENVIRONMENT

- ▶ **Zero** thickness
- ▶ **Zero** drying time
- ▶ **Zero** milling dust
- ▶ **Max** integration into the environment
- ▶ **Max** installation speed
- ▶ **Max** freedom of choice in coverings

Zeromax is a floor heating system obtained by milling the floor support in order to insert the pipes in the milling grooves thus created. It is ideal for those cases requiring **an installation that is perfectly integrated into the environment.**

It may be adapted to suit specific design demands, where

a traditional high thickness system would cause serious installation issues. The floor milling is carried out by **specialised Eurass staff** who will fully install the Zeromax system.

eurass
assistance service

Industrial systems and special applications

Industrial buildings have specific structural needs as they generally occupy **large surfaces** needing money-saving, quick management. The industrial building is a place of work and as such must be primarily functional and practical, while always taking into account the safety and comfort of its occupants. The radiating system is invisible, thereby keeping the space free from encumbrances, improving worker safety. The space can also accommodate goods, shelves, production lines, etc., providing a flexible structure to the internal areas.

Special buildings, such as churches, theatres and gymnasiums cannot forgo climatic well-being for those occupying them at certain times of their lives. Each of these types of buildings needs **specifically-developed heating and cooling solutions**, according to the type and amount of use that they are subjected to and the specific structures marking them.



euroindustry system

ULTRA HARD-WEARING FLOORING

- ▶ Ideal for warehouses and storage sheds
- ▶ High performance system

SPECIAL PATENTED CLIP

Thanks to the special clip, specifically developed for the euroindustry system, the installation of the pipes is facilitated by a patented fitting system that enables the pipe to be fitted firmly and easily to the metal mesh as its direction is chosen.

euorete | eurobarra systems

FLEXIBILITY IN THE CHOICE OF INSULATION

- ▶ Ideal for large surfaces and large environments with flooring made with non-reinforced screed



radiating module system

THE RADIATING FLOOR SYSTEM THAT FURNISHES

- ▶ Flexible modular system
- ▶ Quick installation
- ▶ Wide range of finishes



europlan system

THE IDEAL SOLUTION FOR PLACES OF WORSHIP

- ▶ The ideal solution for heating churches with flooring that falls under restrictions imposed by the Fine Arts
- ▶ Platform crafted to measure



eurosport system

THE FLEX FLOOR SYSTEM

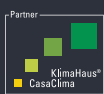
- ▶ Ideal system for heating environments with solid wood sports flooring
- ▶ Radiating flooring without screed

SYSTEM	insulating	λ_d [W/mK]	Acoustic [dB]	thickness [mm]	pipe [mm]	pipes distance [cm]
RESIDENTIAL AND TERTIARY						
euroflex extra	EPS thermoformed	0.034	-	10/31.5 23/44.5 30/51.5 41/62.5 50/71.5 67/88.5	14x2 16x2 18x2	5 10 15 20
europius-flex	EPS	0.034	thickness 27 mm $\Delta L_w = \sim 20$	27 44 60 74	18x2 20x2	7.5 10 15 20
europius-lambda	EPS + graphite	0.030	-	24 39 47 62 80 100	18x2 20x2	7.5 10 15 20
europius-silentium	EPS sintered with graphite coupled to rubber fibre sheath	0.030 EPS	screed and ceramics $\Delta L_w = 37$ $L_{n,w} = 55$ floating parquet $\Delta L_w = 44$ $L_{n,w} = 48$	24+8	18x2 20x2	7.5 10 15 20
eurosuper	polyurethane + polyethylene foam	0.024 polyurethane	$B^* = 140$ kg/m ² $\Delta L_w = 23$ $B^* = 80$ kg/m ² $\Delta L_w = 20$	21+2 31+2 44+2 53+2	18x2 20x2	7.5 10 15 20
eurotop	polyurethane + cork rubber sheath	0.024 polyurethane	$B^* = 140$ kg/m ² $\Delta L_w = 27$ $B^* = 80$ kg/m ² $\Delta L_w = 24$	21+3	18x2 20x2	7.5 10 15 20
ecoplus	wood fibre	0.038	$B^* = 140$ kg/m ² $\Delta L_w = 28$ $B^* = 80$ kg/m ² $\Delta L_w = 26$	21+4 31+4	18x2	10 15 20
Leonardo ceiling	plasterboard + EPS sintered with graphite	0.030	-	15+35	10x1.3	5.5
	plasterboard + EPS	0.034	-	15+35	10x1.3	10
Leonardo wall	plasterboard + insulation	0.25 plasterboard	-	25 + insulation	10x1.3	6.5
ecowall	celenit	0.058	-	20	12x2	-

RESTRUCTURING						
zeromax	EPS XPS polyurethane	0.034 0.024	-	0 (excluding insulation)	14x2	-
euromax	polyurethane	0.024		euromax 10 20insulating 20 30	8x1.1 12x2	12
euroslim	EPS	0.033	-	25	14x2	12.5 25

INDUSTRIAL						
euroindustry	EPS XPS	0.034	-	20 30 40	20x2 25x2.3	-
eurorete eurobarra	EPS XPS	0.034		20 30 40	18x2 20x2	10 20 30

CLASSE A BENES
SOLUZIONE AVANZATE RISCALDAMENTO
RADIANTE
SOSTENIBILITÀ RICERCA & SVILUPPO E P
RISPARMIO ENERGETICO SPECIALIST
BENESSERE COMFORT INVISIB
RISCALDAM



Distributed by:

eurotherm®
radiant comfort systems

Pillhof 91 - 39057 Frangarto BZ

Branch

T +39 0471 63 55 00

Zona industriale Pianura Vomano

F +39 0471 63 55 11

64014 Notaresco (TE)

mail@eurotherm.info

www.eurotherm.info

